

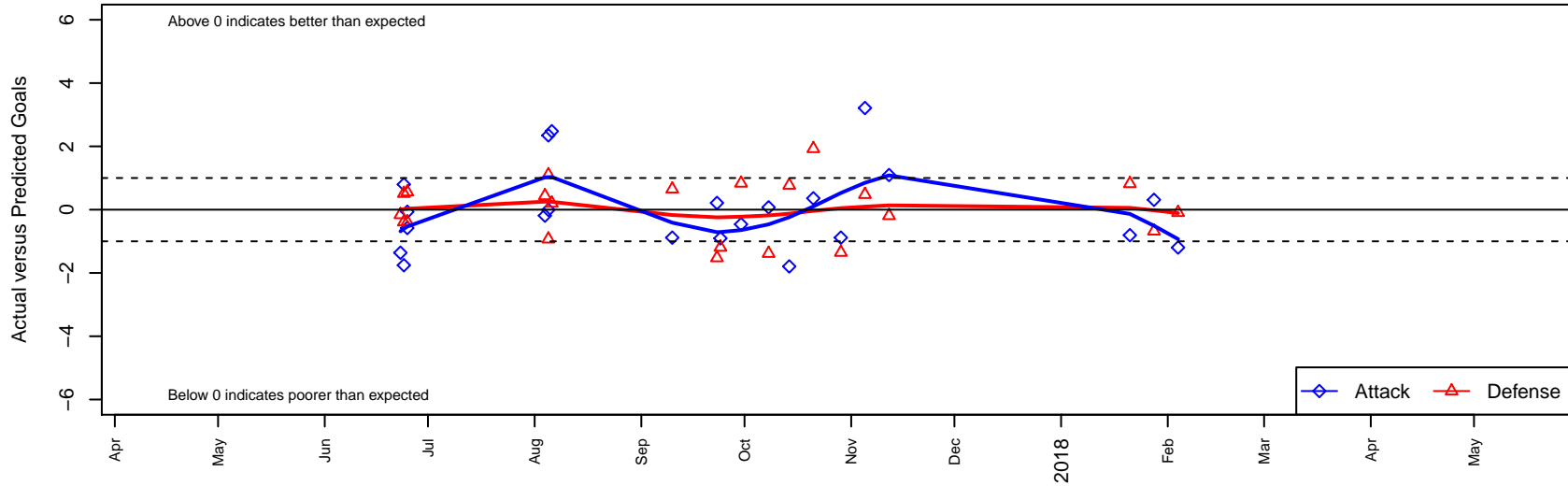
# Washington Timbers White 1 B01

Washington Timbers  
 Vancouver, WA  
 B01 total strength=1552  
 attack=11.24 defense=16.38  
 fall league = PTT B00 BHS

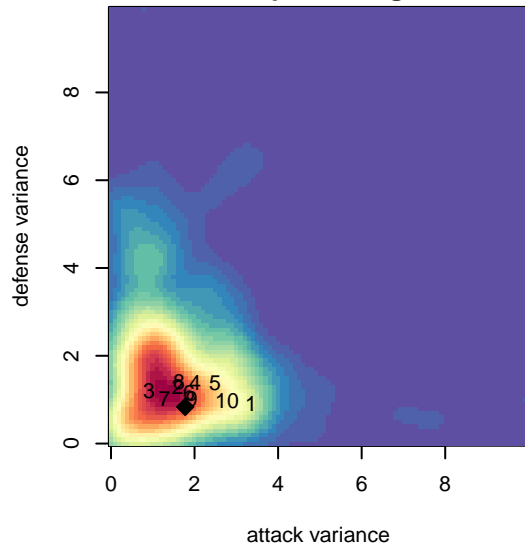
alt names used:  
 WASHINGTON TIMBERS FC B01 WHITE  
 WA Timbers 01B White 1

Venues played:  
 2017 Clash At the Border Gold/Silver/Bronze  
 2017 Mt Hood Challenge U19 Gold  
 2017 PTT B00 BHS  
 2017 WYS Presidents Cup B01 Division 2

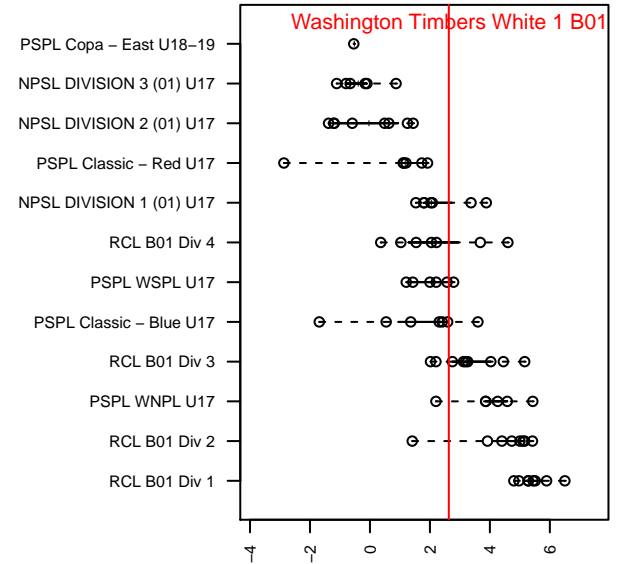
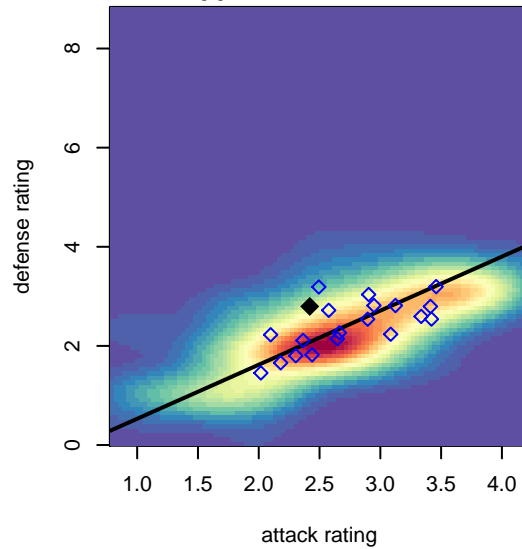
**Washington Timbers White 1 B01**  
 Dots are actual minus expected GF (blue circles) and GA (red triangles).  
 Blue line is smoothed change in attack strength. Red is smoothed change in defense strength.



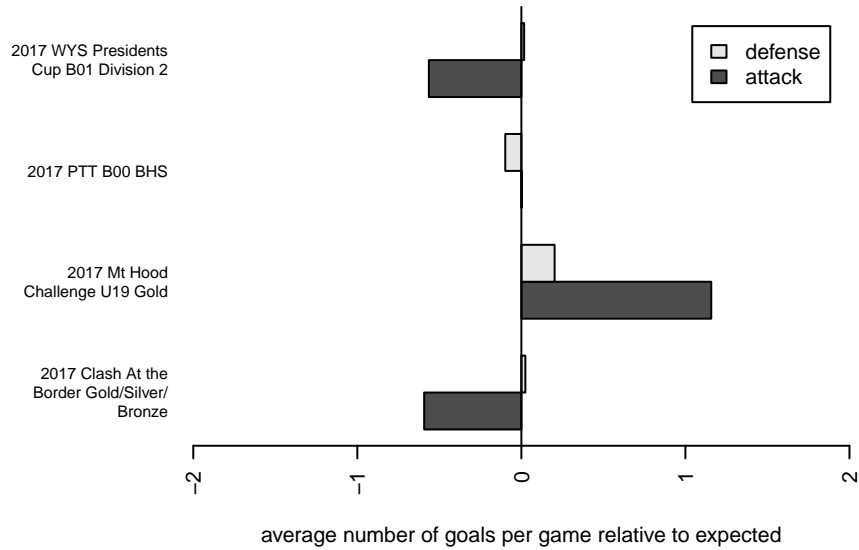
**attack and defense variance (black dot)  
relative to other teams  
and top 10 in region**



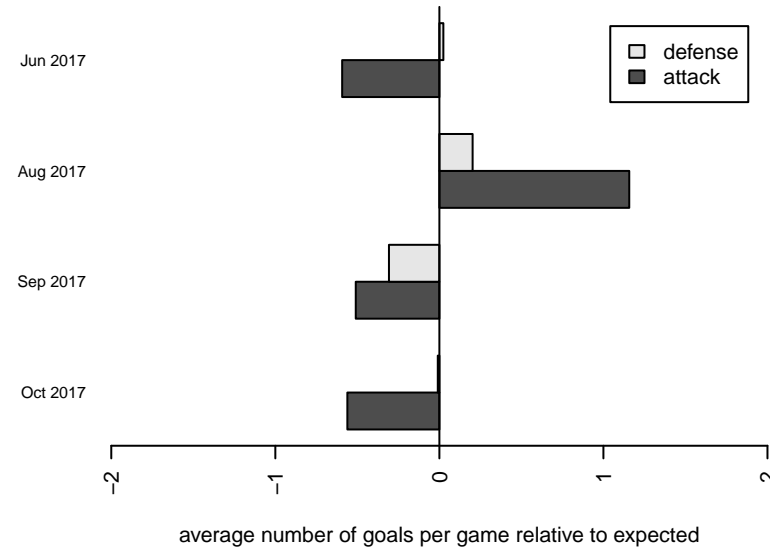
**attack and defense rating  
relative to others at age  
and all opponents in last 13 months**



**Performance relative to 13 month average**



**Performance relative to 13 month average**



<b>date</b>	<b>home</b>		<b>away</b>		<b>venue</b>	<b>pred.home</b>	<b>pred.away</b>
2018-02-04	Blackhills FC Black B01	1	Washington Timbers White 1 B01	0	2017 WYS Presidents Cup B01 Division 2	0.91	1.20
2018-01-28	Washington Timbers Green 1 B01	2	Washington Timbers White 1 B01	1	2017 WYS Presidents Cup B01 Division 2	1.32	0.69
2018-01-21	Washington Timbers White 1 B01	0	WPFC Navy B01	0	2017 WYS Presidents Cup B01 Division 2	0.81	0.82
2017-11-12	Washington Timbers White 1 B01	2	Pacific FC Blue B01	2	2017 PTT B00 BHS	0.91	1.81
2017-11-05	Pacific FC Dynamo B02	0	Washington Timbers White 1 B01	6	2017 PTT B00 BHS	0.48	2.79
2017-10-29	Washington Timbers White 1 B01	0	FC Salmon Creek Blue B00	3	2017 PTT B00 BHS	0.88	1.65
2017-10-21	Washington Timbers White 1 B01	1	Academia Leon B00	0	2017 PTT B00 BHS	0.64	1.93
2017-10-14	Toluca Portland SC Elite B02	0	Washington Timbers White 1 B01	0	2017 PTT B00 BHS	0.77	1.79
2017-10-08	Washington Timbers Green 2 B01	2	Washington Timbers White 1 B01	2	2017 PTT B00 BHS	0.62	1.93
2017-09-30	Washington Timbers White 1 B01	0	LASC Cuervos B99	1	2017 PTT B00 BHS	0.46	1.83
2017-09-24	Pacific FC Blue B01	3	Washington Timbers White 1 B01	0	2017 PTT B00 BHS	1.81	0.91
2017-09-23	Washington Timbers White 1 B01	3	Pacific FC Dynamo B02	2	2017 PTT B00 BHS	2.79	0.48
2017-09-10	FC Salmon Creek Blue B00	1	Washington Timbers White 1 B01	0	2017 PTT B00 BHS	1.65	0.88
2017-08-06	FWFC Blue B00	1	Washington Timbers White 1 B01	3	2017 Mt Hood Challenge U19 Gold	1.20	0.52
2017-08-05	Washington Timbers White 1 B01	1	BSC Portland Gold B01	2	2017 Mt Hood Challenge U19 Gold	1.01	1.07
2017-08-05	Harbor Premier Green B99	0	Washington Timbers White 1 B01	3	2017 Mt Hood Challenge U19 Gold	1.10	0.65
2017-08-04	Breakers Black B01	1	Washington Timbers White 1 B01	1	2017 Mt Hood Challenge U19 Gold	1.44	1.19
2017-06-25	Washington Timbers White 1 B01	2	Westside Timbers Samba B01	0	2017 Clash At the Border Gold/Silver/Bro	2.07	0.56
2017-06-25	Washington Timbers White 1 B01	0	Eastside Timbers Black B01	1	2017 Clash At the Border Gold/Silver/Bro	0.58	0.61
2017-06-24	Washington Timbers White 1 B01	0	Bend FC Timbers White B01	1	2017 Clash At the Border Gold/Silver/Bro	1.76	0.61
2017-06-24	Washington Timbers White 1 B01	2	THUSC Steel B01	0	2017 Clash At the Border Gold/Silver/Bro	1.20	0.51
2017-06-23	GS Surf B B01	1	Washington Timbers White 1 B01	0	2017 Clash At the Border Gold/Silver/Bro	0.84	1.36